

Participatory Variety Trials to Assess Response to Environment in Organic Vegetable Crops

Alexandra Lyon, University of Wisconsin

March 3, 2015



Welcome to the webinar!

- The webinar will start at the top of the hour.
- Find a handout of the slides and a fact sheet at <http://www.extension.org/pages/71272>
- To type in a question, use the question box on your control panel. We will read the questions aloud after the c. 45 minute presentation.
- The webinar is being recorded and you can find it in our archive in the coming week at <http://www.extension.org/pages/25242>





Alexandra Lyon

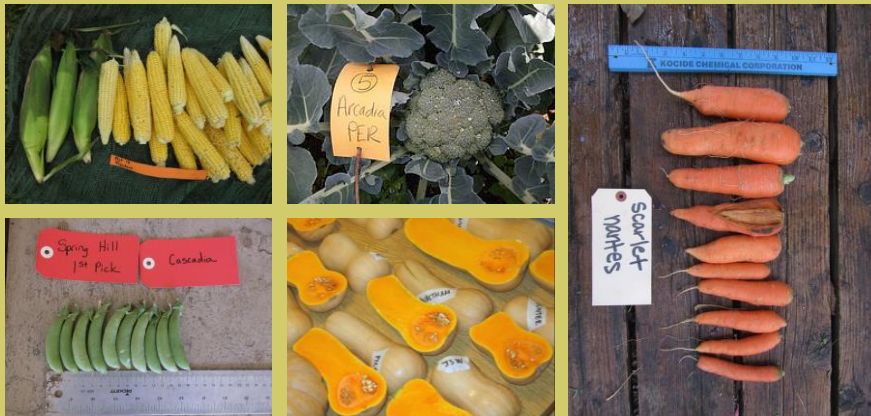


PARTICIPATORY VARIETY TRIALS TO ASSESS RESPONSE TO ENVIRONMENT IN ORGANIC VEGETABLE CROPS

Alex Lyon, M.S.
Professor Erin Silva
University of Wisconsin-
Madison

PRESENTATION OUTLINE

- NOVIC Project Overview
- Understanding response to environment
- Evaluating response to environment
- Conclusions and recommendations



**Northern Organic Vegetable
Improvement Cooperative**

FARMER USES FOR VARIETY TRIALS

• Motivations:

- Look for needed traits
- Replace unavailable varieties
- Satisfy curiosity
- Begin on-farm variety improvement

• Challenges:

- Multi-site and multi-year trials
- Replications
- Data collection and analysis



RESEARCHER USES FOR VARIETY TRIALS

• Motivations:

- Beginning and end of plant breeding process
- Selection
- Education/demonstration

• Challenges:

- Research stations are not "target environment"
- Lack of farming expertise
- Guessing at what farmers want



WHAT IS NOVIC?

Participatory variety trials on organic farms

Funding through USDA OREI

Research partners & plant breeders:

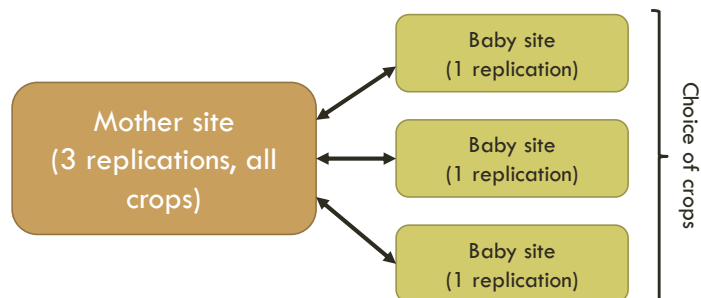
- Oregon State University (Jim Myers)
- University of Wisconsin-Madison (Bill Tracy)
- Cornell University (Michael Mazourek)
- Organic Seed Alliance (John Navazio, Laurie McKenzie)
- Organic farmers in OR, WA, NY, WI, MN

Organic Variety Trials Reports

- varietytrials.eorganic.info



MOTHER-BABY TRIAL DESIGN



- Facilitates farmer participation/on-farm evaluation
- Minimizes space and labor for farmers
- Provides replicated data on research stations
- Modified from Snapp et al. 2002
 - [eOrganic: Participatory On-Farm Research Webinar](#)

	NOVIC I	NOVIC II
Growing seasons	2010-2013	2015-2017?
Crops	<ul style="list-style-type: none"> • Sweet corn • Squash: butternut • Broccoli • Snap peas • Carrots • Regional choice 	<ul style="list-style-type: none"> • Sweet corn • Squash: acorn & delicata • Cabbage • Tomatoes • Peppers • Regional choice
Data collection	<ul style="list-style-type: none"> • Same on research station and farms 	<ul style="list-style-type: none"> • Stations: Full dataset • Farms: Focus on qualitative data and farmer ratings



IMPORTANCE OF RESPONSE TO ENVIRONMENT

- Types of adaptation
- Adaptation and organic farms
- Implications for breeding

RESPONSE TO ENVIRONMENT

Wide adaptation

- Variety does well over large areas
- High mean yields across environments

Specific adaptation

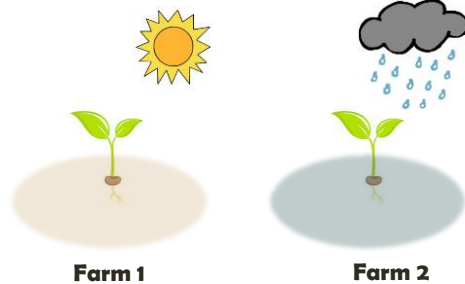
- Variety ranks among the highest yielders at some locations, but not others
- (Abidin et al. 2005)

Stability

- Yields vary relatively little around the average yield (Shukla 1972)

SPECIFIC (LOCAL) ADAPTATION

- On-farm/decentralized selection
 - Ceccarelli 2003 (barley)
- Dedicated organic breeding
 - Murphy 2007 (wheat)
 - Renaud 2014 (broccoli)
 - Drinkwater et al. 1995 (tomatoes)
- Addressing farm-to-farm variation
 - Wolfe et al., 2008



WIDE ADAPTATION

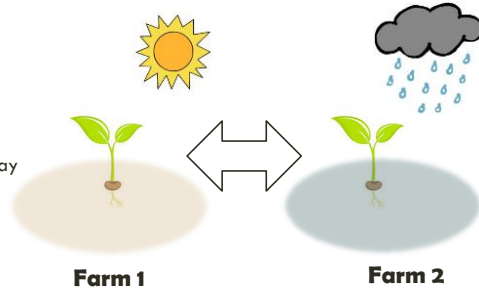
• Benefits:

- High yielding across different environments
- More efficient use of plant breeding resources

• Drawbacks:

- Best overall performer in all locations may not be the best in specific locations
- Fewer varieties grown, less biodiversity

Atlin et al. 2000



GENETICS X ENVIRONMENT INTERACTIONS

Large G x Location interaction

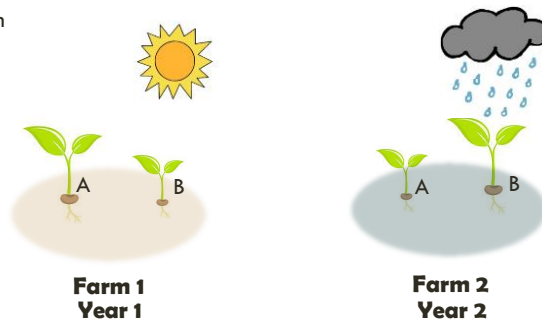
(predictable)

→ specific adaptation

Large G x Year interaction

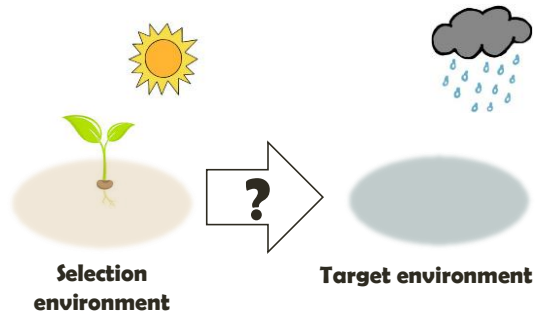
(unpredictable)

→ wide adaptation



(Allard 1964)

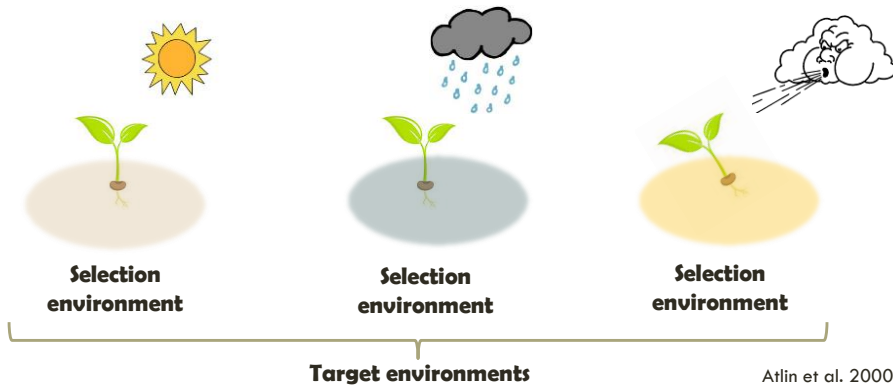
INDIRECT SELECTION



DIRECT SELECTION



BREEDING FOR WIDE ADAPTATION



EVALUATING RESPONSE TO ENVIRONMENT

RESEARCH OBJECTIVES

- Determine response of varieties to diverse year x location environments; detect GxE interactions.
- Assess feasibility of simple graphic methods to analyze stability and performance.
- Make recommendations to improve participatory trialing.

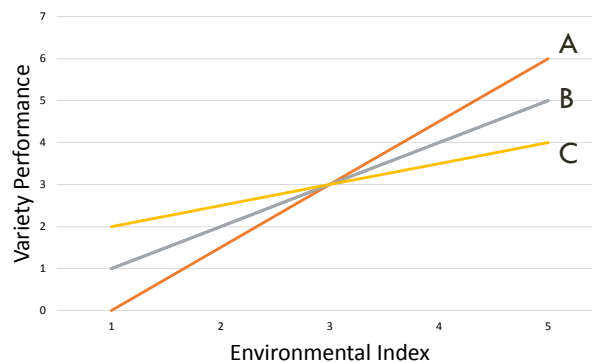
METHODS - VARIABLE SELECTION

1. Identified crops with most complete quantitative data
Looked for yield variables
2. Selected variables
Broccoli head diameter (cm)
Squash marketable weight per plant (kg)
Squash marketable number per plant
3. Selected environments and varieties
Environments = Year x Location
Found optimal varieties x environments to maximize data

SELECTED VARIETIES FOR ANALYSIS

Broccoli	Squash
<ul style="list-style-type: none"> Solstice (OP) Common Ground Population (OP) OSU Composite (OP) Windsor (F1) Arcadia (F1) Gypsy (F1) Belstar (F1) 	<ul style="list-style-type: none"> Bugle (OP) Early (F1) JWS 6823 (F1) Pilgrim (F1) Metro (F1) Waltham (OP) Tiana (F1)

METHODS - ADAPTABILITY ANALYSIS



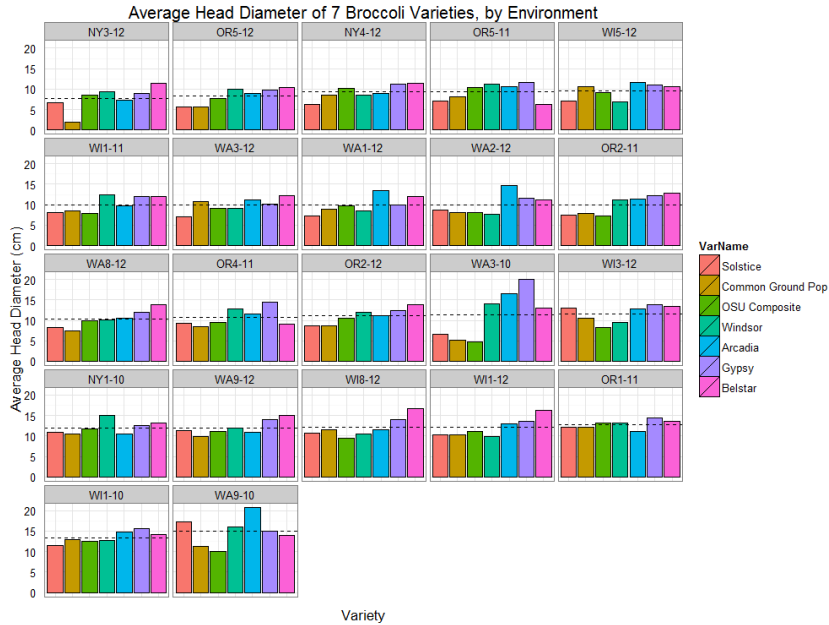
A: Adaptation to good environments ($\beta > 1$)

B: Average performance ($\beta = 1$)

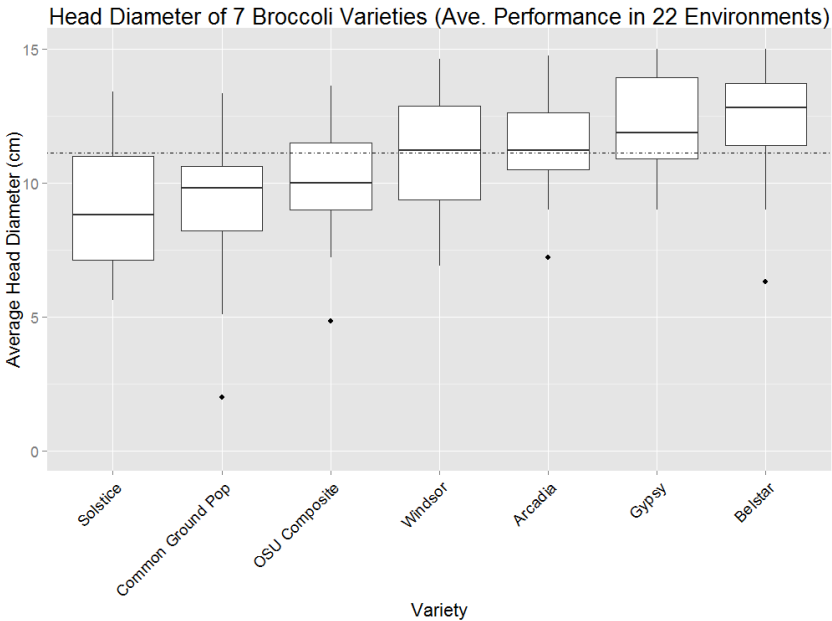
C: Adaptation to poor environments ($\beta < 1$)

Adapted from
Hildebrand & Russell 1996

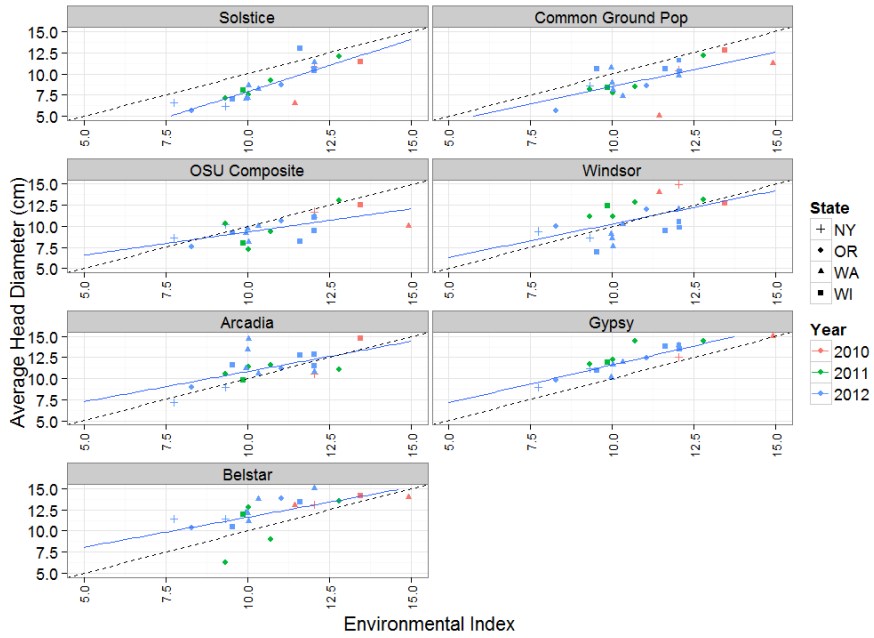
BROCCOLI: HEAD DIAMETER



BROCCOLI: HEAD DIAMETER



BROCCOLI: HEAD DIAMETER

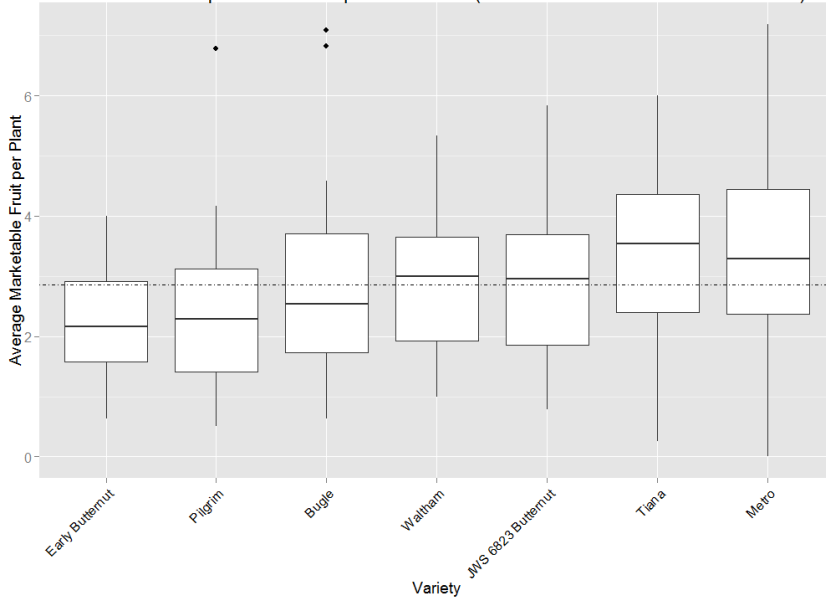


SQUASH: MARKETABLE FRUIT PER PLANT

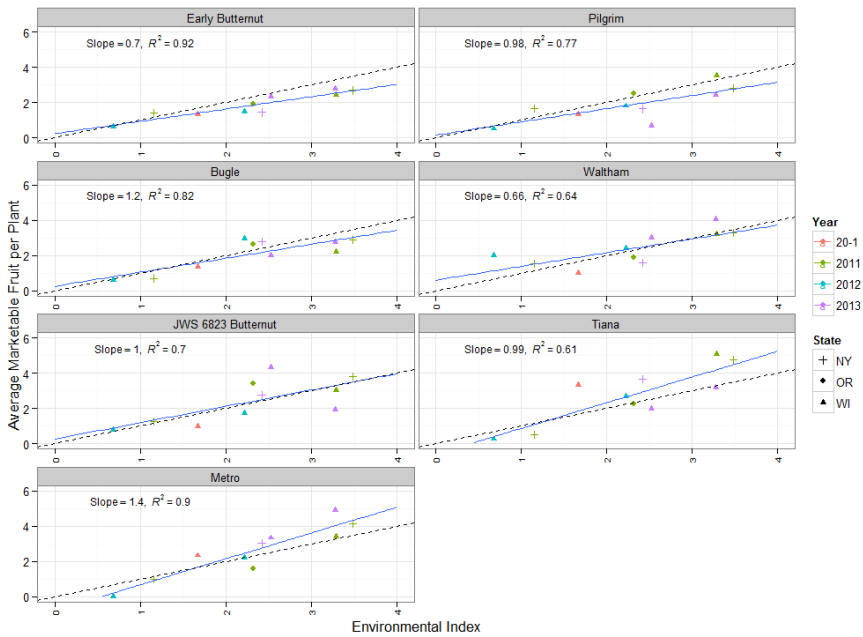


SQUASH: MARKETABLE FRUIT PER PLANT

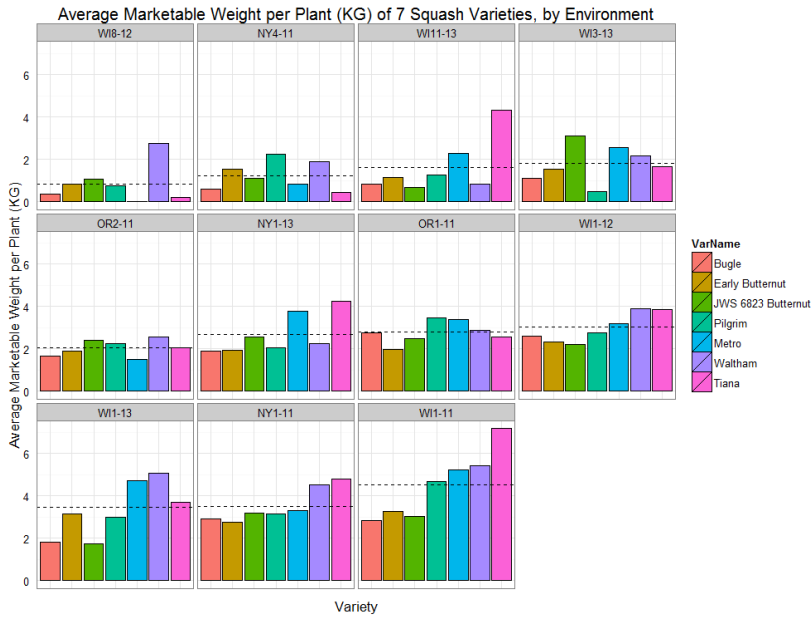
Marketable Fruit per Plant of 7 Squash Varieties (Ave. Performance in 11 Environments)



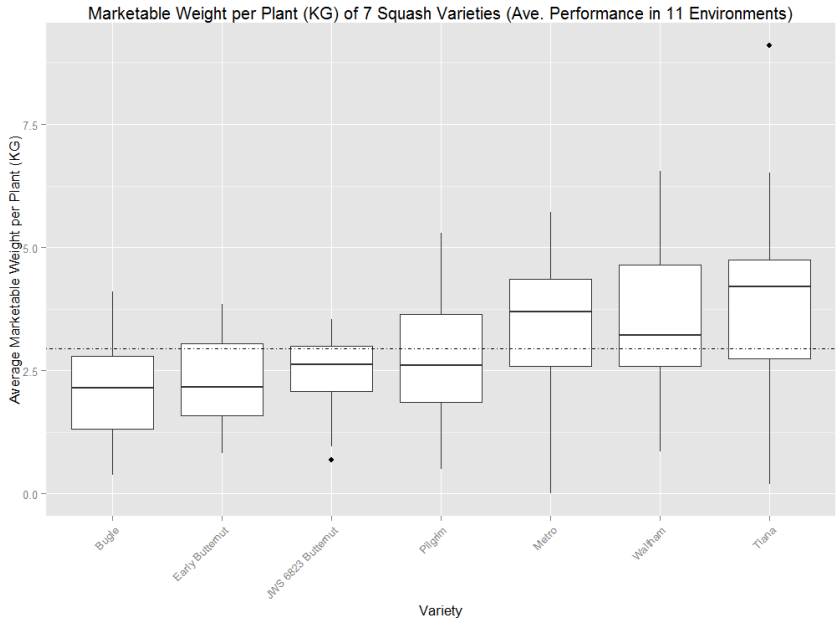
SQUASH: MARKETABLE FRUIT PER PLANT



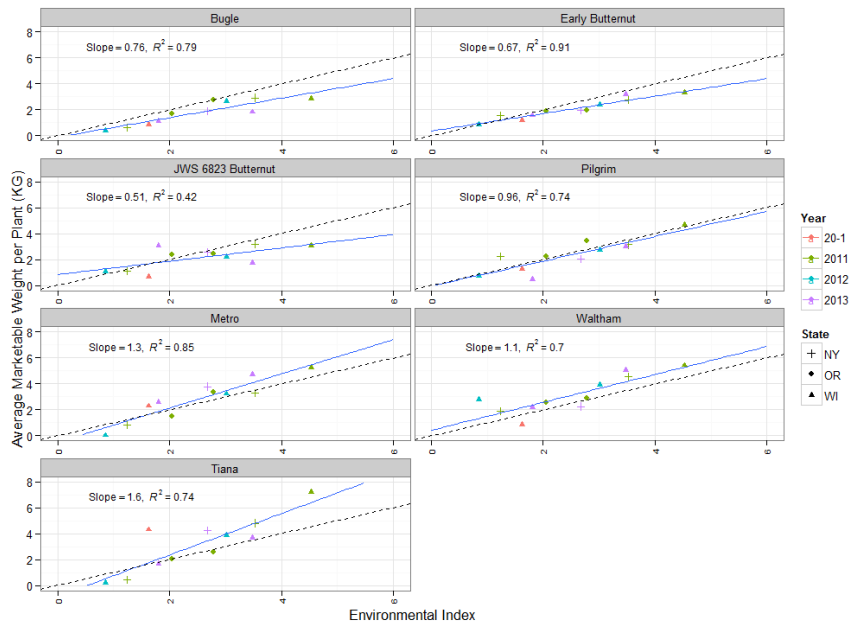
SQUASH: MARKETABLE WIEGHT PER PLANT



SQUASH: MARKETABLE WIEGHT PER PLANT



SQUASH: MARKETABLE WEIGHT PER PLANT



CONCLUSIONS

Broccoli

- Gypsy shows wide adaptation while Belstar is better adapted to poor environments.

Squash

- Metro F1 and Tiana F1 were better adapted to good environments.
- Waltham OP was better adapted to poor environments in terms of fruit number, and showed wide adaptation in terms of weight.

Adaptability analysis

- Useful for visual interpretation of response to environment.
- Does not require the same sites for multiple years.
- Can be used to identify varieties with broad or specific adaptation.

RECOMMENDATIONS

For participatory trialing:

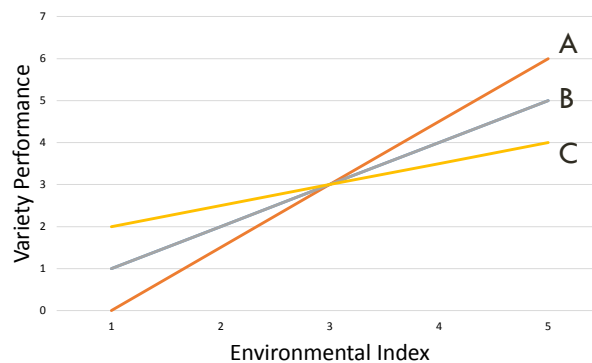
- Communicate importance of multi-year data
- Trialing network can ensure a minimum number of varieties x environments
- With multiple research teams, consistent records are key
- Strategic data collection

For further research:

- Adaptability analysis for other crops, traits, and varieties
- Direct measures of environmental variation to partition environments



WHAT KIND OF ADAPTATION?



A: Adaptation to good environments ($\beta > 1$)

B: Average performance ($\beta = 1$)

C: Adaptation to poor environments ($\beta < 1$)

Adapted from
Hildebrand & Russell 1996

PRIORITIES FOR ORGANIC FARMERS



Wisconsin Organic Seed and Plant Breeding Survey
(Lyon, Silva, Zystro and Bell, n.d. *Agroecology and Sustainable Food Systems*)

“TRIED-AND-TRUES”



“You know, we can have a cold, wet spring like last year, or we can have a rather dry and hot-and-cold spring like we’re having this year—same thing with the summers. **There are some varieties...that we’ve just honed in on. These are gonna be reliable for us regardless of what happens while they’re in the field.**”

THANK YOU

- **Farmer Participants**
- **USDA Organic Research & Education Initiative**
- **Ceres Trust**
- **Annie's Homegrown**
- **Advisor: Erin Silva (UW-Madison)**
- **Committee members: Bill Tracy, Irwin Goldman (UW-Madison)**
- **Other NOVIC Collaborators: Jim Myers (OSU); Micaela Colley, Jared Zystro, Laurie McKenzie, Lane Selman (OSA); Michael Mazourek (Cornell), and many more!**

REFERENCES

- Allard, Robert W, and A. D. Bradshaw. 1964. "Implications of Genotype-Environment Interactions in Applied Plant Breeding." *Crop Science* 4: 503–8.
- Atlin, G. N., R. J. Baker, K. B. McRae, and X. Lu. 2000. "Selection Response in Subdivided Target Regions." *Crop Science* 40 (1): 7–13.
- Ceccarelli, S., S. Grando, M. Singh, M. Michael, A. Shikho, M. Al Issa, A. Al Saleh, et al. 2003. "A Methodological Study on Participatory Barley Breeding II. Response to Selection." *Euphytica* 133 (2): 185–200.
- Drinkwater, L. E., D. K. Letourneau, F. Workneh, A. H. C. van Bruggen, and C. Shennan. 1995. "Fundamental Differences Between Conventional and Organic Tomato Agroecosystems in California." *Ecological Applications* 5 (4): 1098–1112.
- Hildebrand, Peter G., and John T. Russell. 1996. *Adaptability Analysis: A Method for the Design, Analysis, and Interpretation of on-Farm Research-Extension*. 1st ed. Ames: Iowa State University Press.
- Lyon, Alexandra, Erin Silva, Jared Zystro, and Michael Bell. n.d. "Seed and Plant Breeding for Wisconsin's Organic Vegetable Sector: Understanding Farmers' Needs." *Agroecology and Sustainable Food Systems*. doi:10.1080/21683565.2015.1017786.
- Murphy, Kevin M., Kimberly G. Campbell, Steven R. Lyon, and Stephen S. Jones. 2007. "Evidence of Varietal Adaptation to Organic Farming Systems." *Field Crops Research* 102 (3): 172–77.
- Renaud, Erica N. C., Edith T. Lammerts van Bueren, Maria João Paulo, Fred A. van Eeuwijk, John A. Juvik, Mark G. Hutton, and James R. Myers. 2014. "Broccoli Cultivar Performance under Organic and Conventional Management Systems and Implications for Crop Improvement." *Crop Science* 54 (4): 1539.
- Snapp, Sieglinde. 2002. "Quantifying Farmer Evaluation of Technologies: The Mother and Baby Trial Design." In *Quantitative Analysis of Data from Participatory Methods in Plant Breeding*, edited by Mauricio R. Bellon and Jane Reeves, 9–17. Mexico: CIMMYT.
- Wolfe, M. S., J. P. Baresel, D. Desclaux, I. Goldringer, S. Hoad, G. Kovacs, F. Löschenberger, T. Miedaner, H. Østergård, and E. T. Lammerts van Bueren. 2008. "Developments in Breeding Cereals for Organic Agriculture." *Euphytica* 163 (3): 323–46.



Contact me: ahlyon@wisc.edu

More on NOVIC: eorganic.info/novic

Organic Variety Trials Reports: varietytrials.eorganic.info

Erin Silva's Research Program: uworganic.wisc.edu



- Find all upcoming and archived webinars at <http://www.extension.org/pages/25242>
- Find the recording, slides and a handout from this webinar at <http://www.extension.org/pages/71272>
- Have an organic farming question? Use the eXtension Ask an Expert service at <https://ask.extension.org/groups/1668/ask>
- We need your feedback! Please respond to an email survey about this webinar.
- Thank you for coming!

