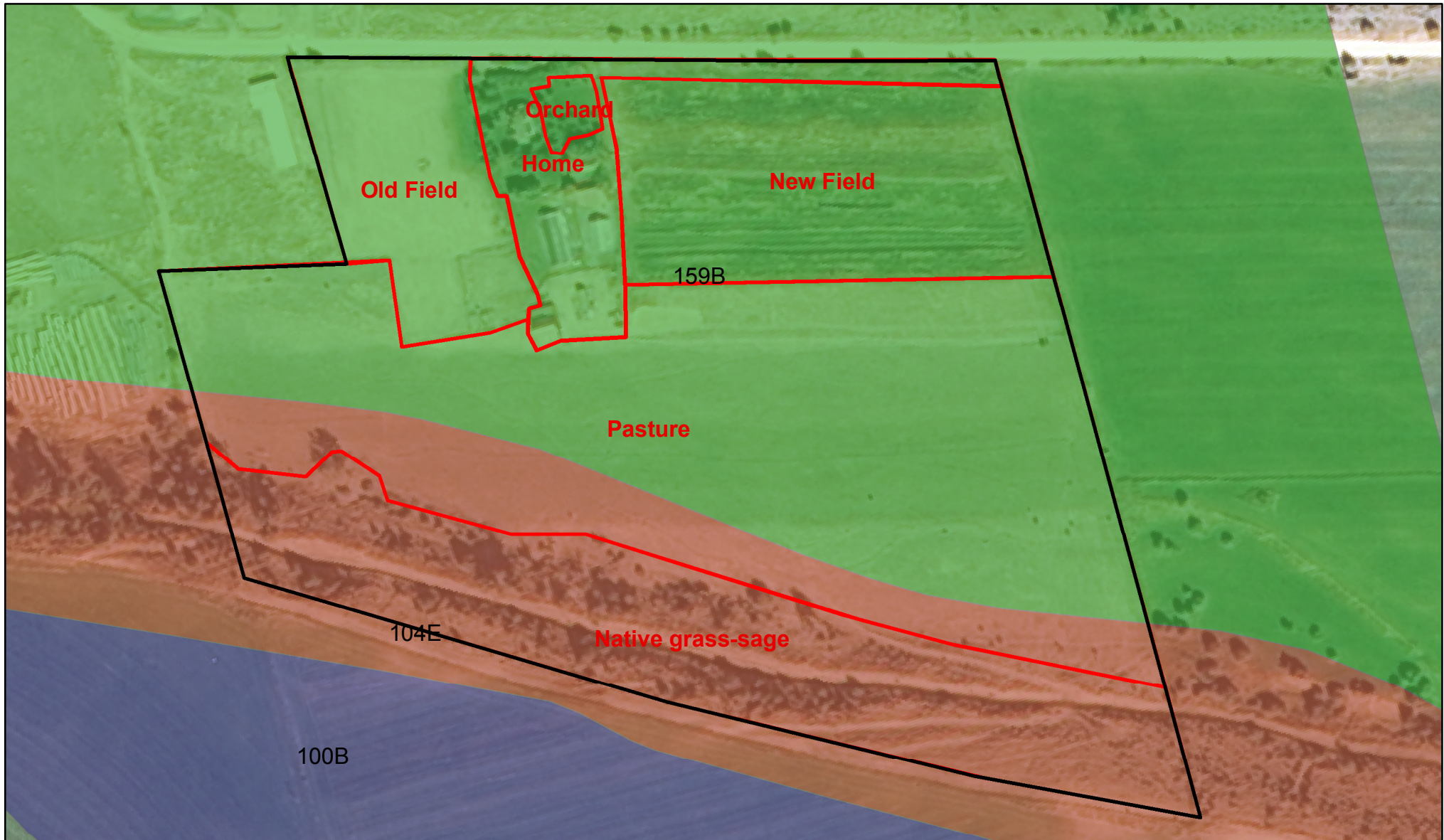






Biodesign Farm Soils



Soils

-  Burnt Fork loam, 0 to 4 percent slopes (100B)
-  Farnuf-Bitterroot-Subwell complex, 15 to 40 percent slopes (104E)
-  Owenfort very cobbly loam, 1 to 4 percent slopes (159B)

-  Parcel outline
-  Field Designations



0 50 100 200 Meters