



---

---

---

---

---

---

---



---

---

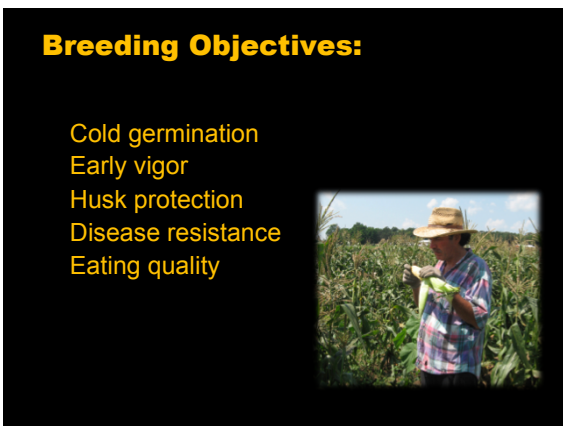
---

---

---

---

---



---

---

---

---

---

---

---

## Two sugary-enhancer sweet corn populations

- Early population: MDseE
- Late population: MDseL

## Derived from double-cross of 4 hybrids

- Sugar Buns
- Mystique
- Miracle
- Ambrosia
- Incredible
- Argent
- Delectable




---

---

---

---

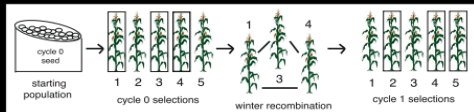
---

---

---

---

## Recurrent Selection



### Summer 2008:

100 rows planted of each population at Gardens Of Eagan Farm in Minnesota

Each row represents a single ear

Approximately 12 rows selected for recombination

---

---

---

---

---

---

---

---

## Selection Criteria



- Germination
- Rust resistance
- Smut resistance
- Husk protection
- Tip fill
- Ear shape
- Sweetness
- Tenderness




---

---

---

---

---

---

---

---

### Remnant Seed



Before planting in Minnesota, a portion of seed from each ear-row are preserved in cold storage at the University of Wisconsin – Madison.

After selection, kernels from the desired rows are retrieved and sent to winter nursery.

---

---

---

---

---

---

---

### Winter nursery: South America



Controlled pollinations via paired row crosses  
Row 1: remnant seed from one selected ear  
Row 2: remnant seed mixture from all remaining ears

---

---

---

---

---

---

---

### The breeding continues . . .

MDseE and MDseL have undergone four cycles of selection



In 2012, we will begin making improvements on population uniformity

Hopeful release of open-pollinated population by 2014

---

---

---

---

---

---

---